

# Injection system Multifix USF



### Application range

- > For installation in cracked concrete (option 1) and non-cracked concrete (option 7) (ETA-16/0107)
- > For installation in masonry (ETA-16/0089)
- > For installation in natural stone (without approval)
- > Approved for anchor rods M8, M10, M12, M16, M20, M24, M27, M30

### Properties

- > Vinyl resin, styrene-free
- > Can be used in wet concrete and water-filled drill holes

### Note

Please observe the corresponding approvals during planning and processing.

**The storage temperature must not permanently exceed 25 °C! Please store upright!**

### Included in delivery

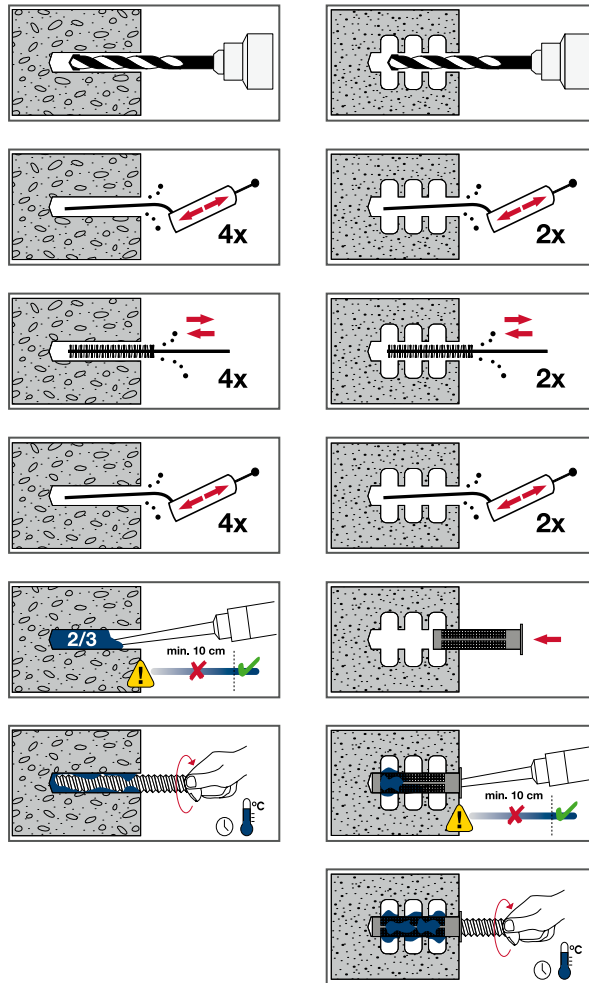
- 1 mortar cartridge
- 1 mixing nozzles

### Cross references

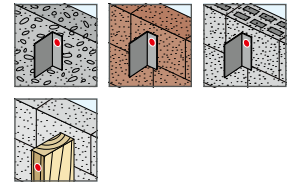
- Anchor rod
- Mesh sleeve
- Cleaning brush
- Blow-out pump
- Applicator gun
- Hammer drill SDS plus
- Duster Expert SDS plus
- Cordless hammer drill



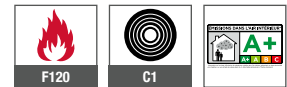
**Watch the video now:**  
<https://www.youtube.com/watch?v=JiykaVskI4w>



### Applications



### Technical specifications

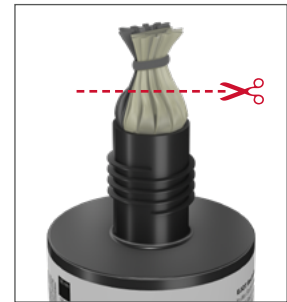


### Certifications

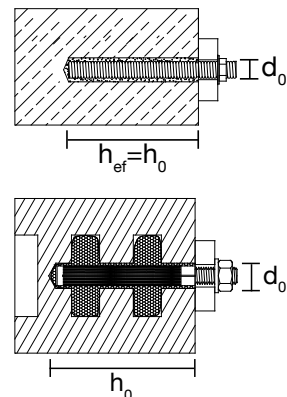


### Base materials

- Approved for
- > Cracked concrete
  - > Non-cracked concrete
  - > Masonry



**Note:**  
 Plastic bag must be cut open before processing!





Installation parameters			
Anchor rod	$d_0$ [mm]	$h_{ef} = h_0$ min-max [mm]	$T_{inst}$ concrete ≤ [Nm]
M8	10	60–160	10
M10	12	60–200	20
M12	14	70–240	40
M16	18	80–320	80
M20	24	90–400	120
M24	28	96–480	160
M27	32	108–540	180
M30	35	120–600	200

Installation parameters			
Ambient temperature [°C]	Processing time	Curing time in dry weather	Curing time in wet weather
-10*	1h 30'	24h	48h
≥ -5	1h 30'	14h	28h
≥ 0	45'	7h	14h
≥ +5	25'	2h	4h
≥ +10	15'	1h 20'	2h 40'
≥ +20	6'	45'	1h 30'
≥ +30	4'	25'	50'
≥ +35	2'	20'	40'
+40	1.5'	15'	30'

\*Min. cartridge temperature +15 °C

Consumption in solid building materials (USF 280 ml)			
Anchor rod	$d_0$ [mm]	$h_0$ [mm]	Number of fills
M8x130	10	80	41
M10x130	12	90	26
M10x170	12	130	18
M12x160	14	110	15
M16x190	18	125	8

Values are only for orientation

Consumption in perforated building materials (USF 280 ml)				
Mesh sleeve	Anchor rod	$d_0$ [mm]	$h_0$ [mm]	Number of fills
USF 12x80	M8	12	85	17
USF 16x85	M8/M10	16	90	11
USF 16x130	M8/M10	16	135	6
USF 20x85	M12/M16	20	90	6
USF 20x130	M12/M16	20	135	4
USF 20x200	M12/M16	20	205	2

Values are only for orientation

### Product online



Order description	Content [ml]	PU [pieces]	Price/1 [EUR]	Article number	EAN
Mortar cartridge USF 280 ml 12VE	280	1		9571000280	4061245010557
<b>NEW</b> Multifix USF 420 ml	420	1		9571001420	4061245081007
Mixing nozzle USF	–	1		9570040141	4061245061900
Mixing extension 500 mm		1		8682900004	4061245081106

Order information: 2 mixing nozzles are included with each cartridge.